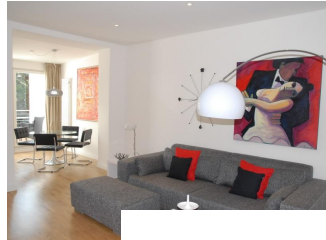


Bright 3-room flat in a building in the classic style in the south of Bonn!

short-term rental apartment	Rent incl. add. costs 1.685,00 EUR per Month	Living space ca. 76,00 qm	Number of rooms 3,0	Available from 31.12.2024
--------------------------------	---	------------------------------	------------------------	------------------------------

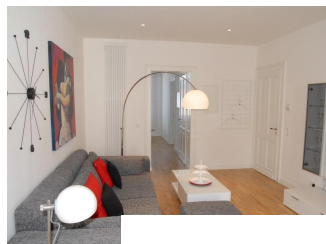
Other dates

District	
Deposit	3.370,00 EUR
Floor	2.Floor
Available until	Open-ended
Minimum rental length	185 days
Smoking / Nonsmoker	Non-smokers only
Balcony	yes



Facilities

- Balkon	- Einbauküche
- Parkett	- Anschluss: Sat
- Fernseher	- Spülmaschine
- Bettwäsche/Handtücher	- Geschirr/Besteck
- löffelfertig	- Bett: doppel
- Bad/ Dusche	- Waschmaschine
- Trockner	- Bett: Bettsofa
- Fliesen	
- bathroom	- with washing machine
- with shower	
- flooring material	- tiles
- parquet	
- kitchen	- fitted kitchen
- with dishwasher	
- technics	
- TV	



References

Please read our Notes on currency conversion
under <http://www.homecompany.de/en/currency-info>

Website synopsis

<http://bonn.homecompany.de/en/object/AG63276>

Description

Bright 3-room flat in a building in the classic style in the south of Bonn!
Nice furnished apartment on the second floor of a restored and modernized building in the classic style from 1898 with large windows and balcony.

Equipped with a living - dining room with dining table for 4 people and access to the sunny balcony, a comfortable sofa, a large TV set; a bedroom with double bed and wardrobe; a study with a sofa bed for guests, desk, bookcase; a fully equipped kitchen with ceramic hob, fridge and dishwasher and a white tiled bathroom with large shower and ceiling windows. The decor is new, modern and bright and is complemented by extraordinary paintings.

There are a gym with rowing machine, bicycle, elliptical machine and also a washer and dryer available for shared use in the basement.

Rent includes utilities.

Top location, doctors, schools, numerous leisure activities, all shops for daily needs within walking distance. Bonn Central Station can be reached in about 15 minutes on foot or in about 7 minutes by tram. Popular destinations such as the Rhine or the Poppelsdorf Castle and the Botanical Gardens are less than a 5-15 minute walk away.

Print out 20.05.2024