

2 rooms with design furniture in a prime location

short-term rental apartment	Rent incl. add. costs 1.590,00 EUR per Month	Living space ca. 85,00 qm	Number of rooms 2,0	Available from 30.11.2019
-----------------------------	---	------------------------------	------------------------	------------------------------

Other dates

District	
Deposit	2.800,00 EUR
Floor	2.Floor
Available until	Open-ended
Minimum rental length	90 days
Smoking / Nonsmoker	Non-smokers only
Balcony	yes

Facilities

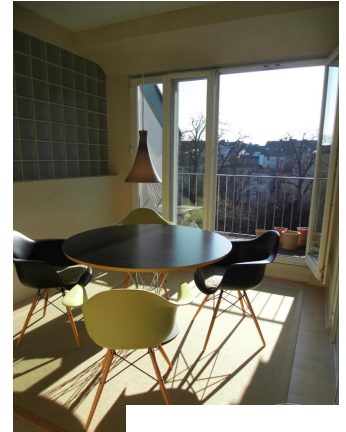
- Waschmaschine	- Trockner
- Bett: doppel	- Balkon
- Bad/ Dusche	- Fernseher
- Stereoanlage	- Einbauküche
- Spülmaschine	- Terrasse
- Laminat	- Geschirr/Besteck
- löffelfertig	
- bathroom	
- with shower	- with washing machine
- flooring material	
- laminate	
- kitchen	
- with dishwasher	- fitted kitchen
- technics	
- TV	

References

Please read our Notes on currency conversion under <http://www.homecompany.de/en/currency-info>

Website synopsis

<http://bonn.homecompany.de/en/object/AG60455>



Description

2 rooms with design furniture in a prime location on the top floor of a beautiful Südstadt Art Nouveau hous. Living room, bedroom, large living room with balcony overlooking a romantic garden, bathroom with shower / WC.

The living room has two leather sofas and a leather chair with a coffee table, a large hanging sideboard with digital satellite TV with flat screen TV, a stereo system (Bose), a desk with chair (Eames), a desk lamp (Megaron), and a large design floor lamp. Internet included.

The master bedroom, has a double bed (1.60 x 2.00 cm), with side tables and lamps (bedside), a large wardrobe and a dresser.

The high-quality kitchen is equipped with a stove (cooker), dishwasher, refrigerator, coffee maker, dishes, utensils, pots and pans, etc..

The dining area is equipped with table and 4 chairs (Eames) and is also the access to small roof terrace (south) with magnificent view.

Coin operated washer and dryer in the cellar.

Cleaning service 1x per month fee EUR 60 plus

The apartment is in a quiet yet very central. Station, University, the Hofgarten, Rhine promenade and the restaurants and cafes of vibrant walk away for 2-5 minutes. Supermarket about 5 minutes walk.

Print out 19.10.2019